

Kingsmead Road, Tulse Hill, SW2

6 bedroom house - semi-detached for sale

£1,200,000

Freehold

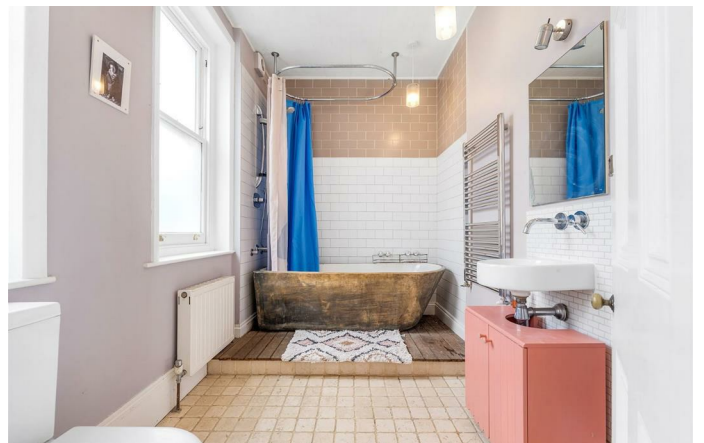
Property Details

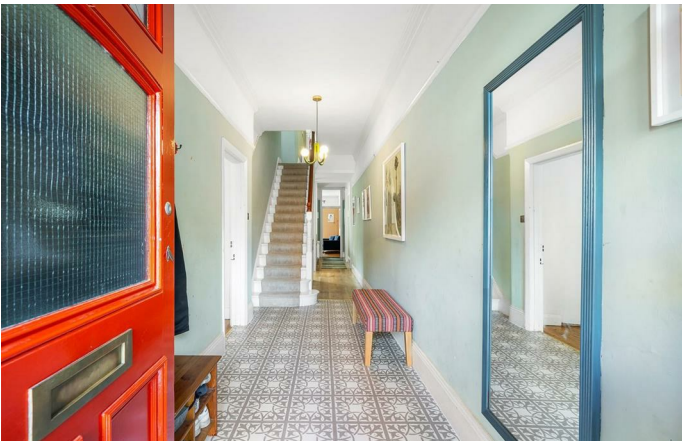
This substantial six bedroom semi-detached family home is arranged over three generous floors and offers an abundance of character, versatile living space and a beautifully mature rear garden. Set back behind a private driveway, the property boasts a handsome bay-fronted exterior and well-proportioned accommodation throughout. The ground floor comprises an elegant front reception room with a feature fireplace and bay window, alongside a spacious kitchen with generous cupboard space, ample worktop surfaces and a sash window overlooking the garden. A separate dining room provides an ideal setting for family meals and entertaining, while the rear reception room features a fireplace and opens into the conservatory via bi-folding doors, creating a wonderful connection to the garden. Upstairs, six well-sized bedrooms provide flexible accommodation for growing families or home working, including an impressive principal bedroom spanning the width of the property with built-in cabinetry, bookshelves and a feature fireplace. The home further benefits from excellent storage and a spacious family bathroom.

Features

- Six bedrooms
- Semi-detached house
- Mature rear garden
- Private driveway
- Over 2300 square feet of internal space
- Bright and airy with high ceilings
- Eight minute walk to Tulse Hill station
- Five minute walk to Hillside Gardens Park
- Close to Brockwell Park

Council tax band F EPC rating E (53)

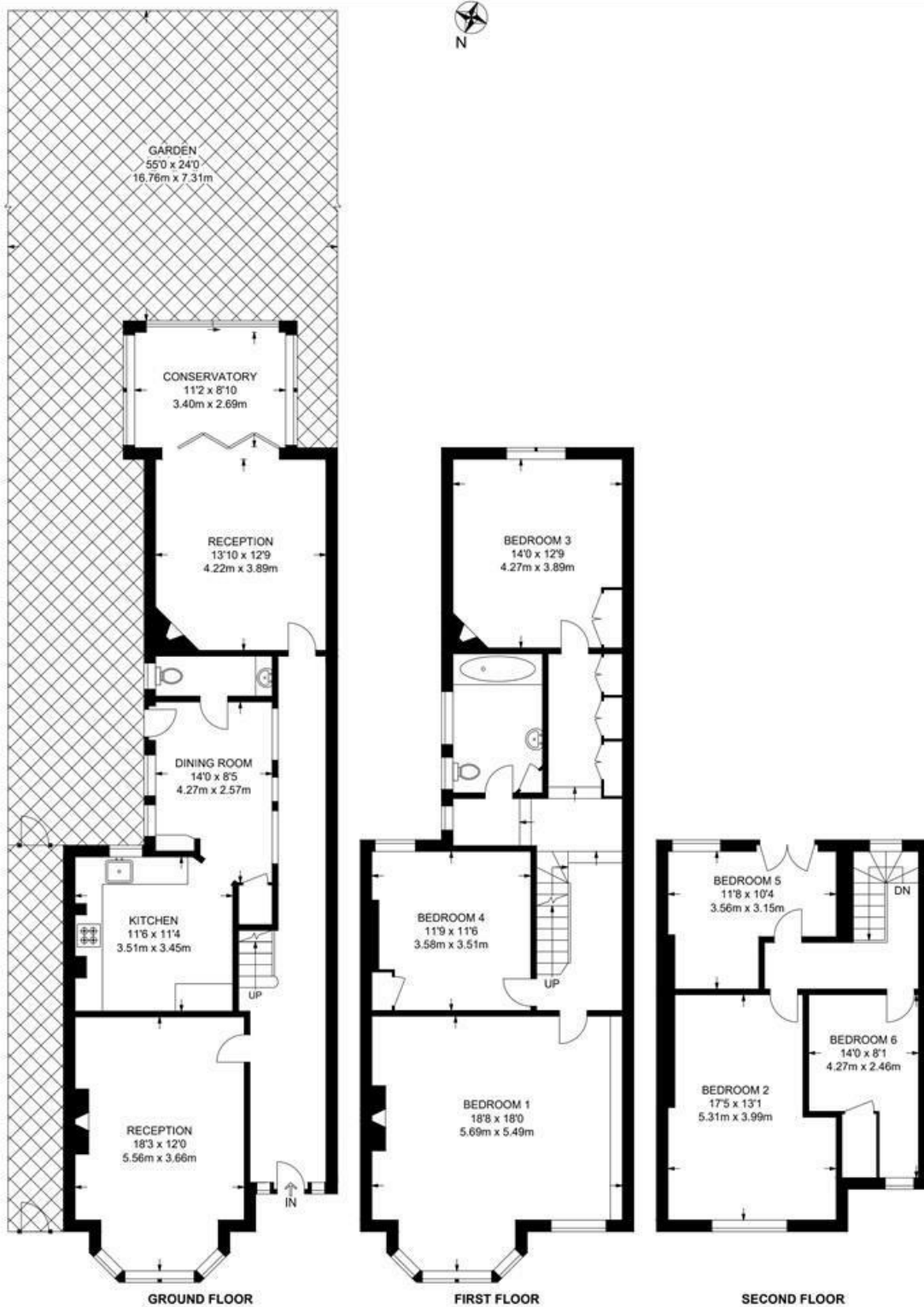




Kingsmead Road, Tulse Hill, SW2

Kingsmead Road, SW2
6 Bedroom House

APPROXIMATE GROSS INTERNAL AREA: 2311 SQ FT / 214.7 SQ M



While we try our very best, floor plans are produced as a guide only and we take no responsibility for the precise accuracy with which any property is represented.

Kingsmead Road, Tulse Hill, SW2

